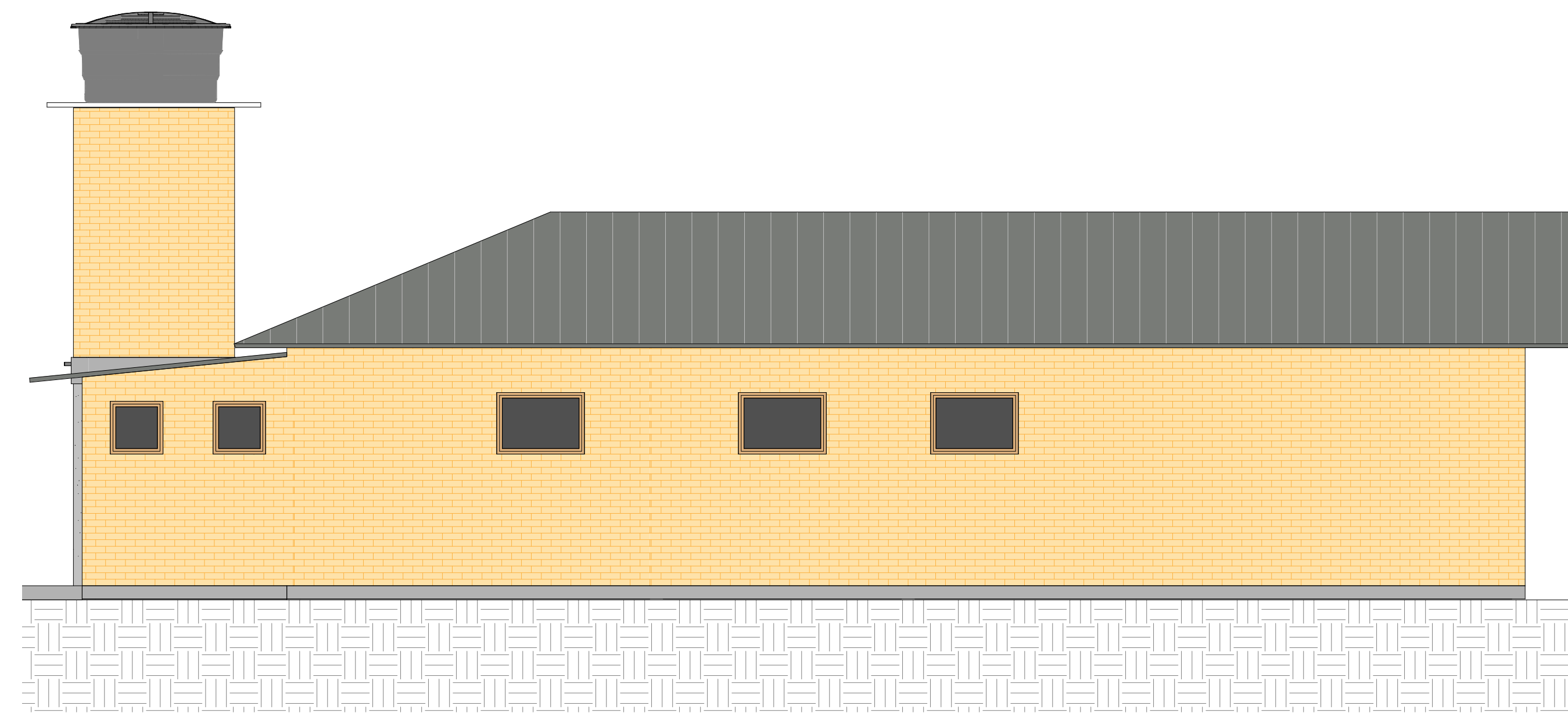
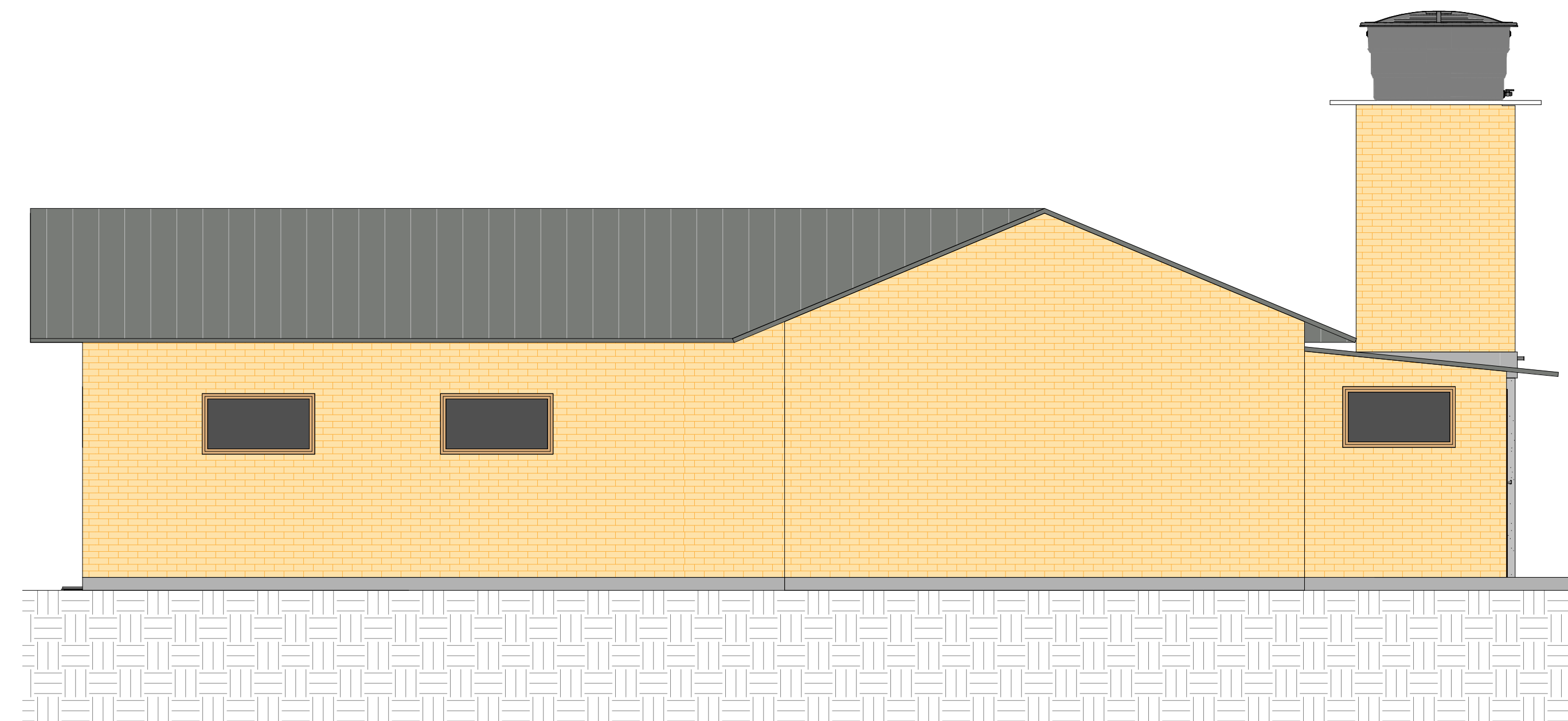


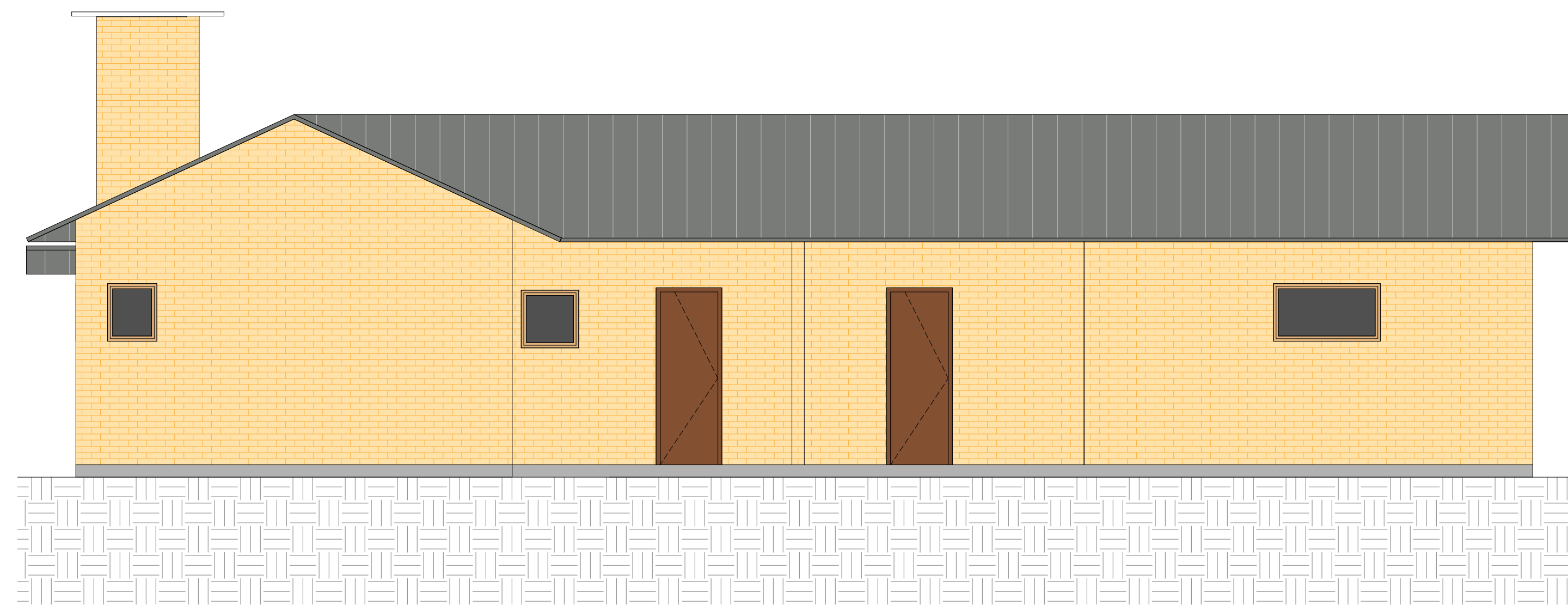
FACHADA SUL  
ESCALA 1:50



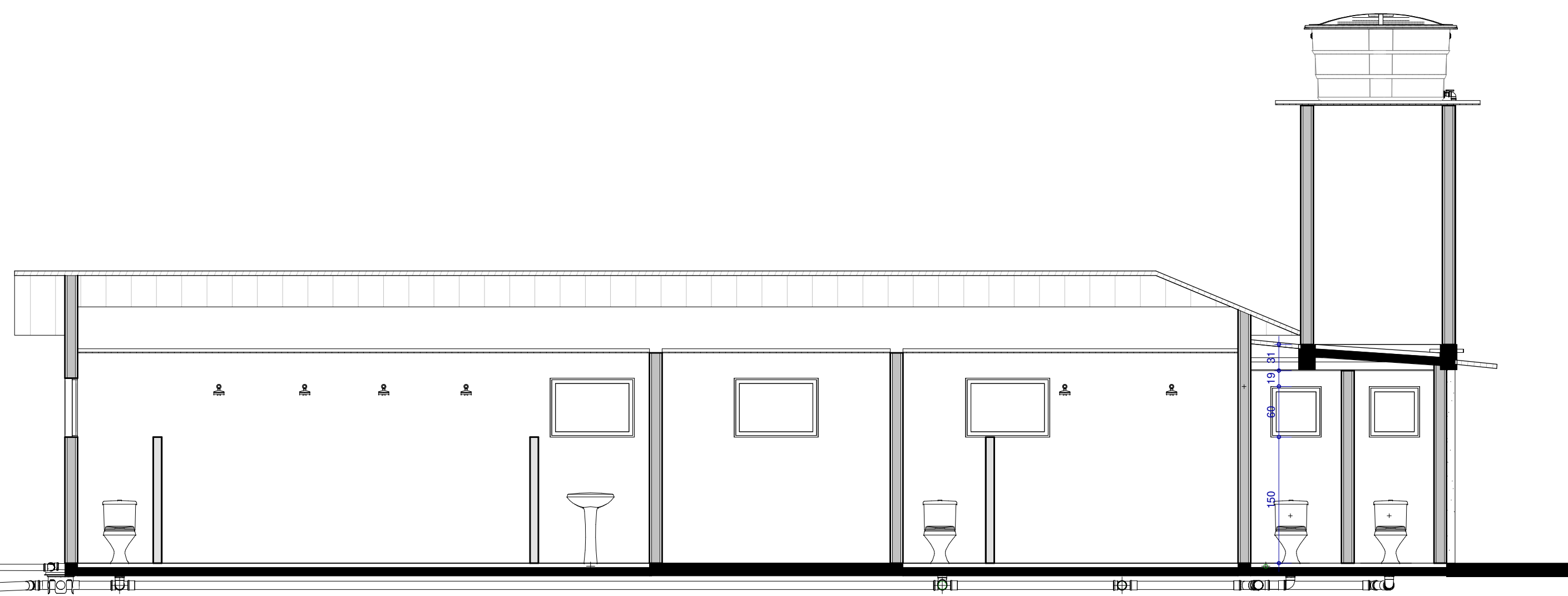
FACHADA LESTE  
ESCALA 1:50



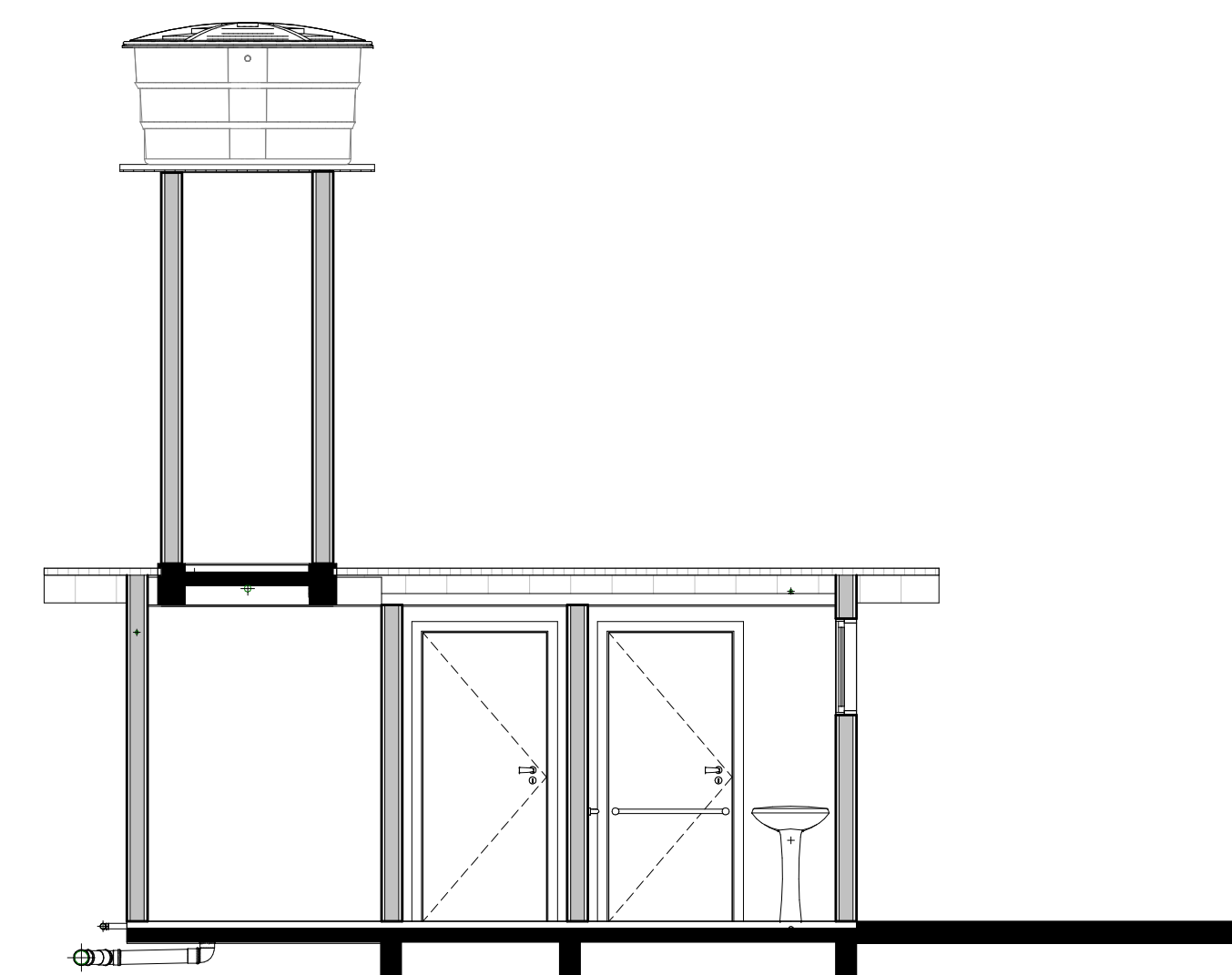
FACHADA OESTE  
ESCALA 1:50



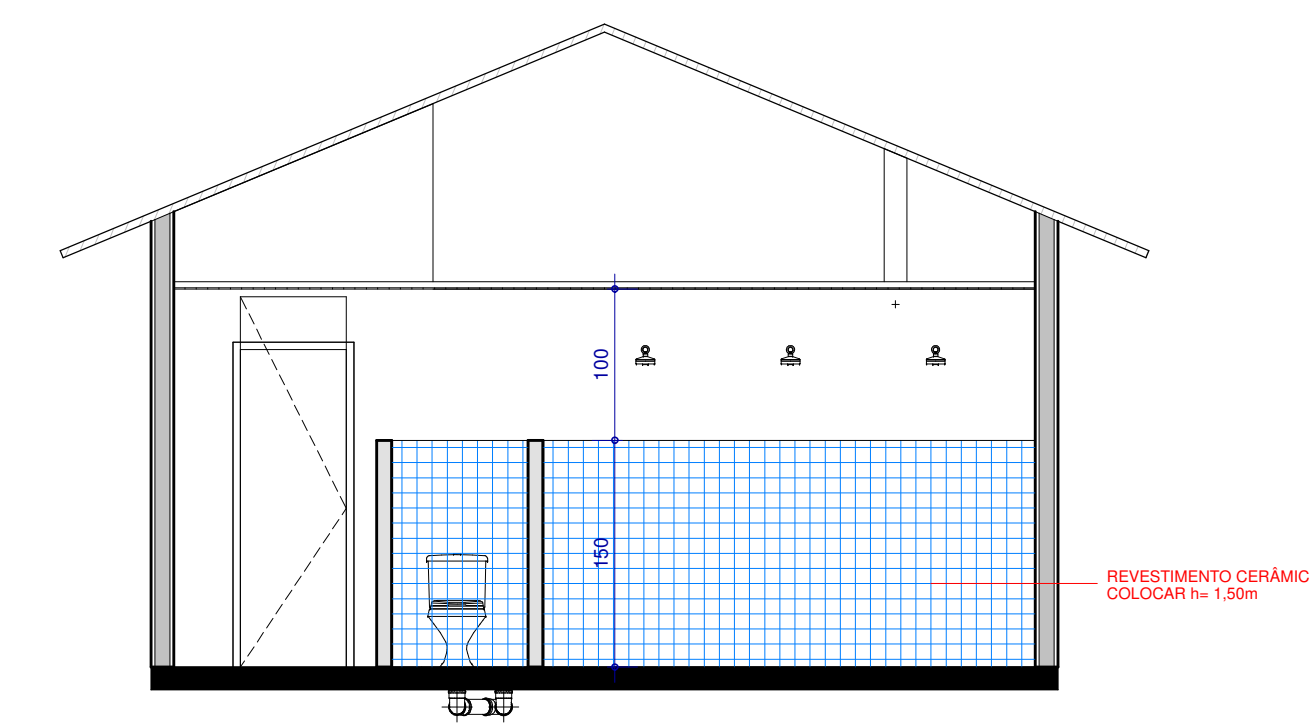
FACHADA NORTE  
ESCALA 1:50



CORTE BB'  
ESCALA 1:50



CORTE AA'  
ESCALA 1:50



CORTE CC'  
ESCALA 1:50

OBRA		LOCAL	
REFORMA CAMPO JUVENIL		Cotiporá, RS	
PROJETO ARQUITETÔNICO			
ENG. CIVIL CRISTIANO FUGALI   CREA/RS - 236549		ÁREA TOTAL:	
COLABORAÇÃO		APPROVADO EM:	
JORDANA BERGAMIN REGIA		VERSÃO:	
PROPRIETÁRIO			
PREFEITURA MUNICIPAL DE COTIPORÁ   CNPJ: 90.898.487/0001-64		DATA: 01/10/2019	
ASSUNTO			
CORTES E FACHADAS		ESCALA	
		DESENHO	
PRANCHETA			
		02/03	