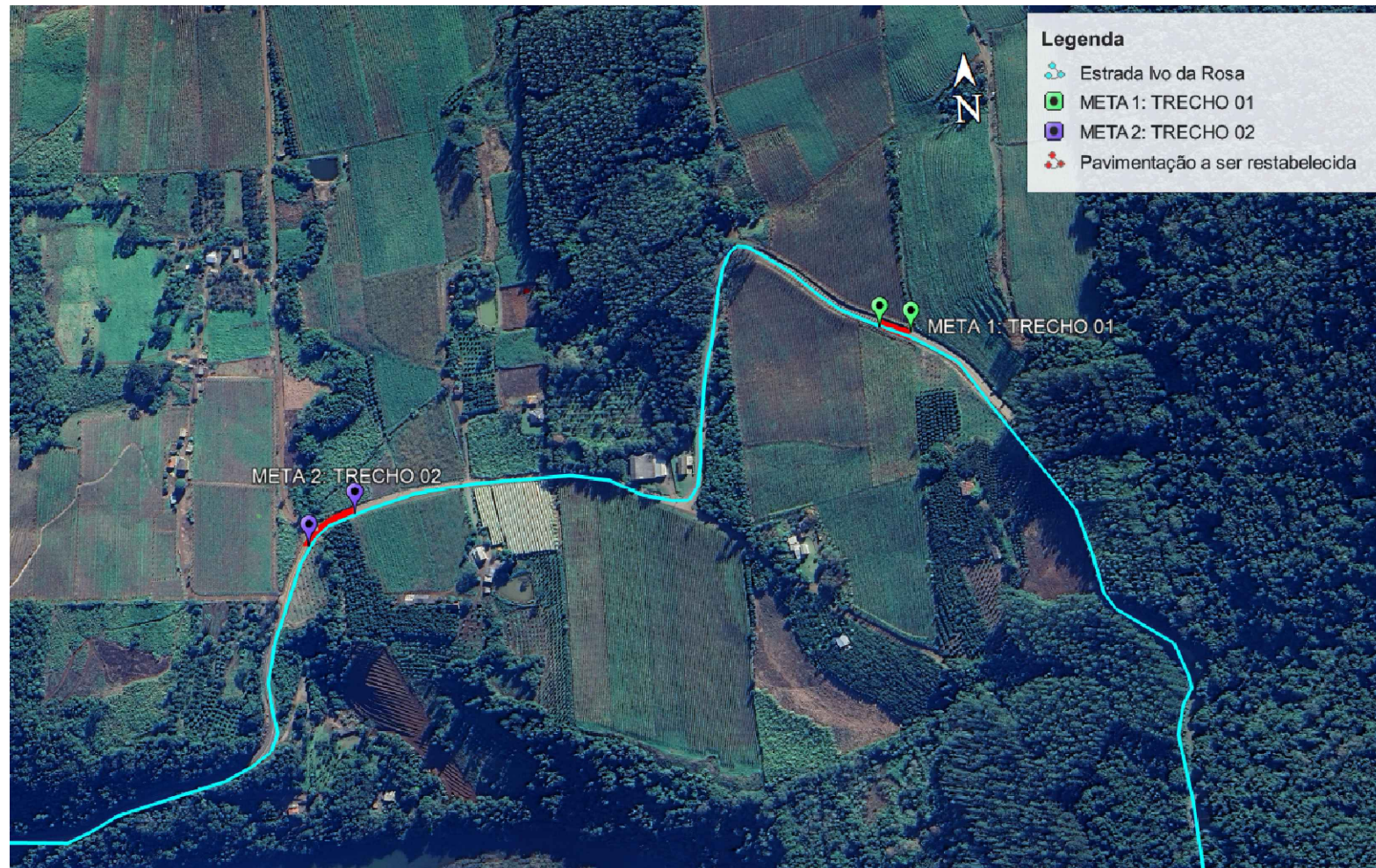
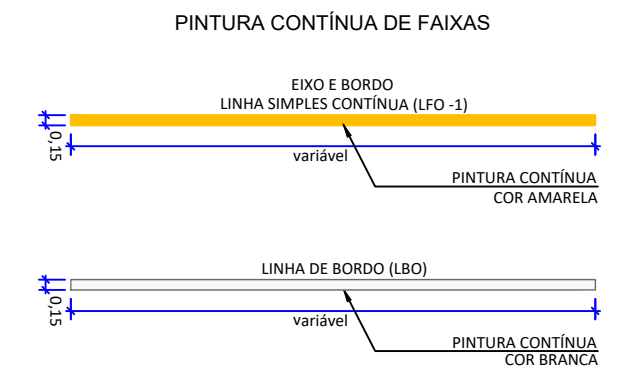
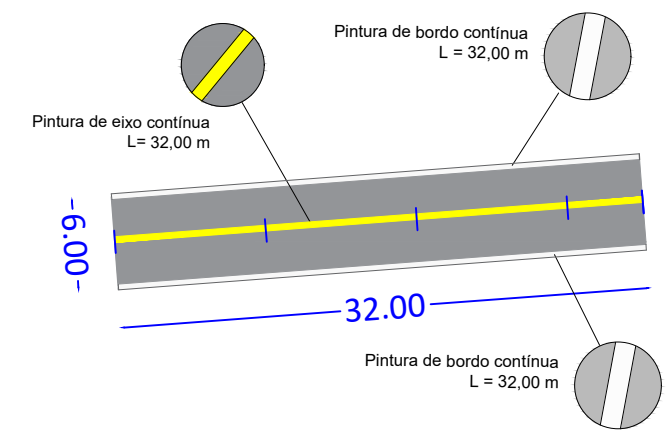
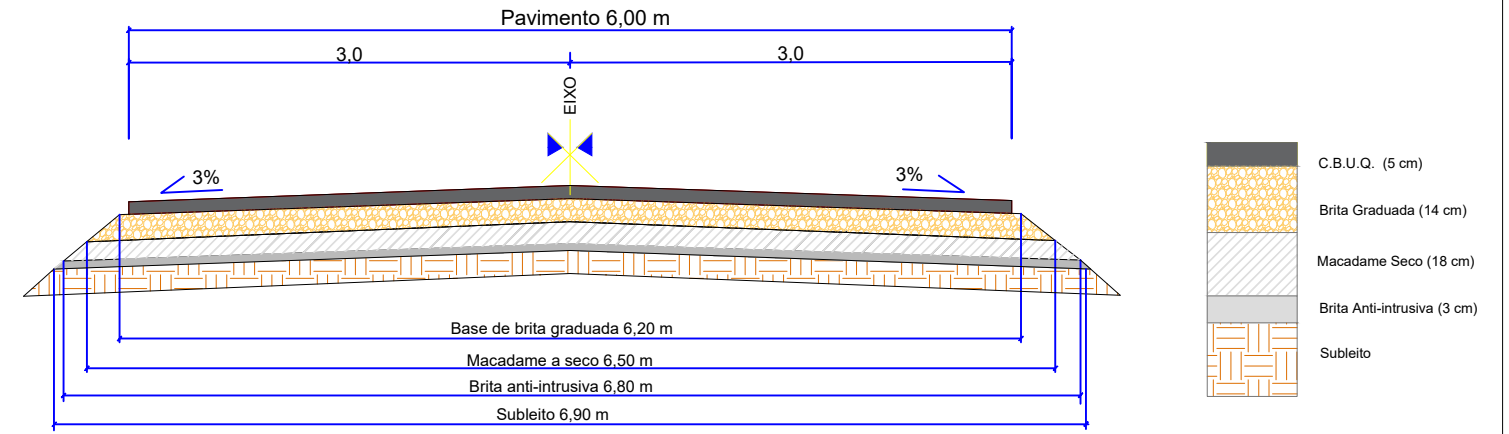


LOCALIZAÇÃO META 1
ESCALA: 1/3000



METAS 1 E 2
ESCALA: 1/5000

Restabelecimento de pavimentação asfáltica - Estrada Ivo da Rosa

Proprietário:

Prefeitura Municipal de Cotiporã CNPJ: 90.898.487/0001-64

Responsável Técnico:

ENG. CIVIL CAMILA SCHMITT CACCIA | CREA RS190280



ARQUIVO

DATA
maio/2024

ESCALA
indicada

Meta 1 - Trecho 1: 32,00m

PRANCHA
01|02