

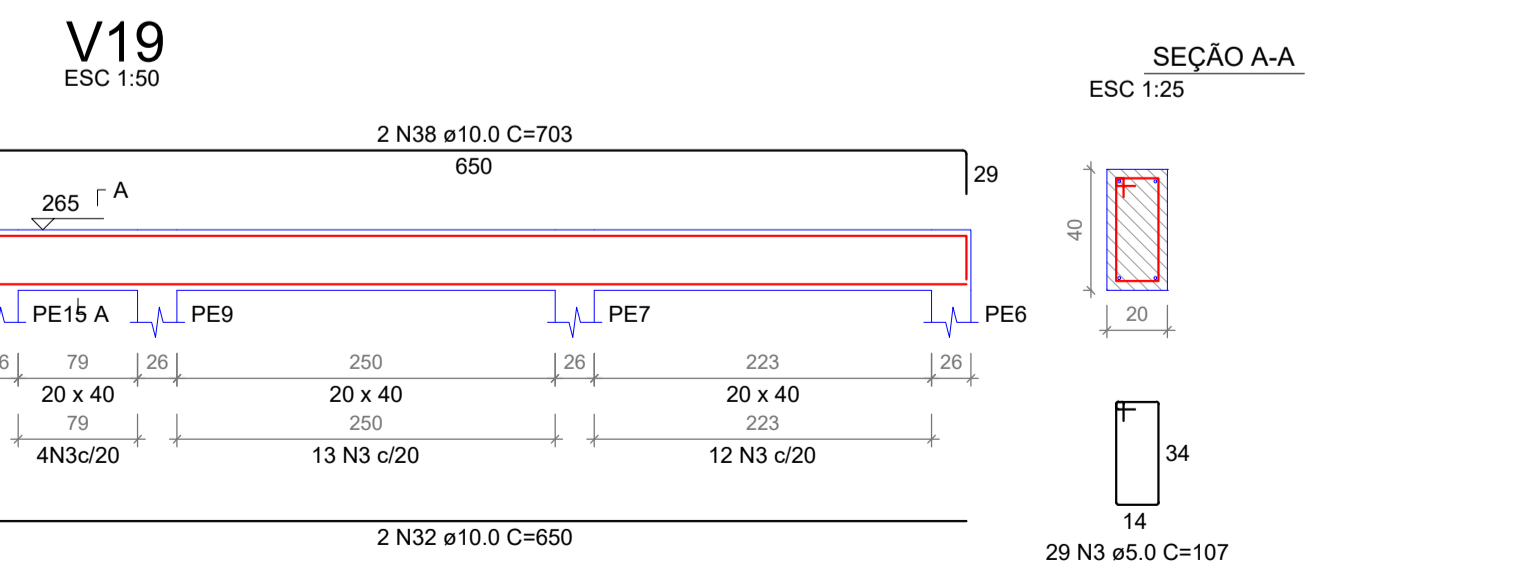
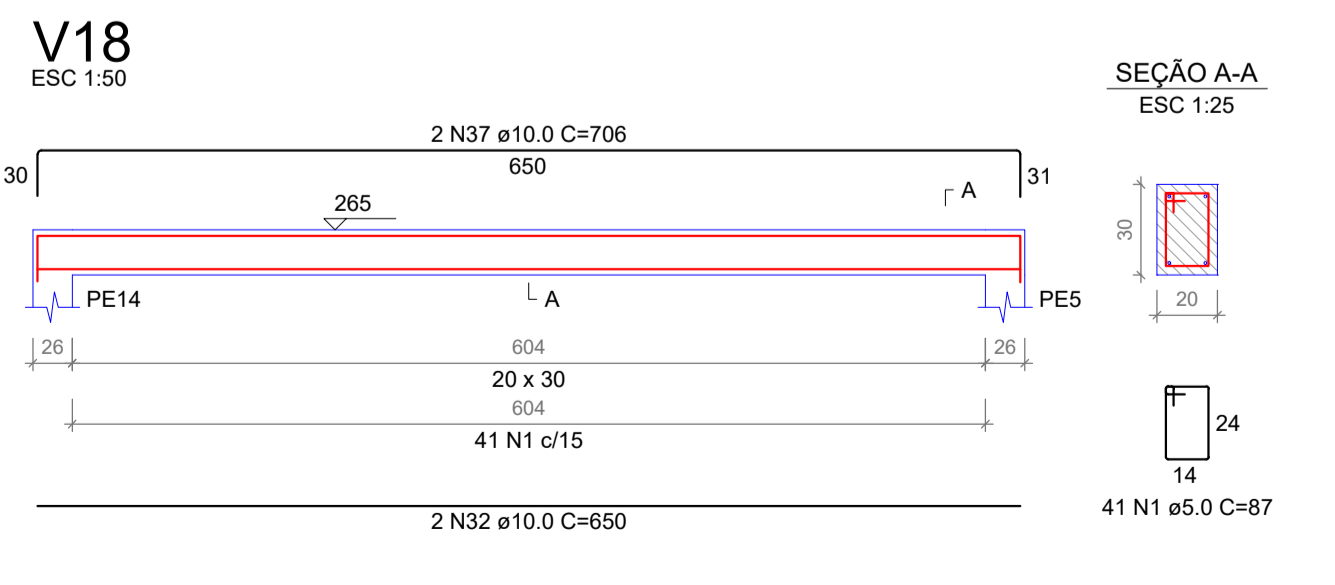
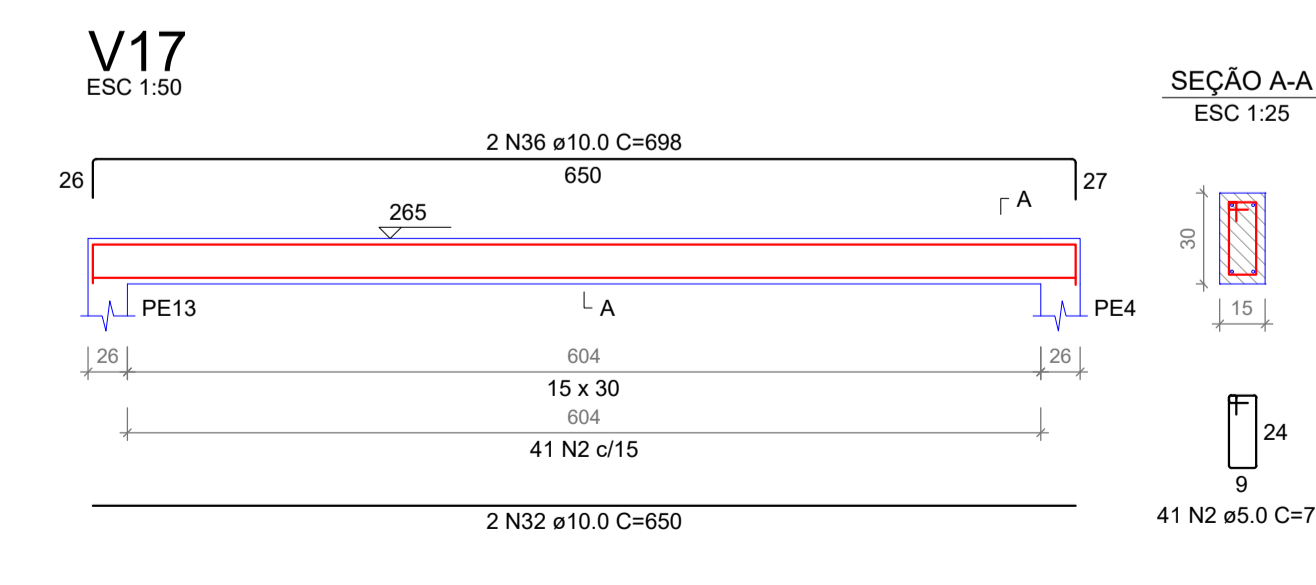
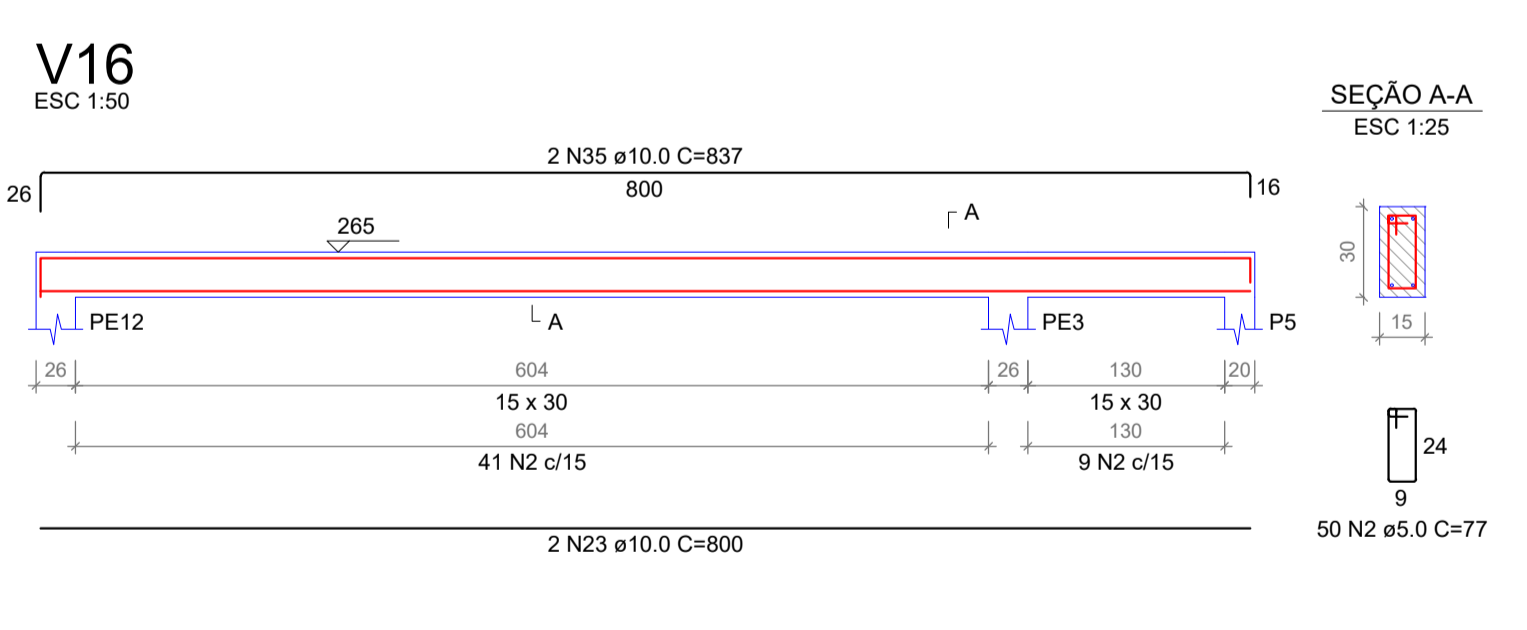
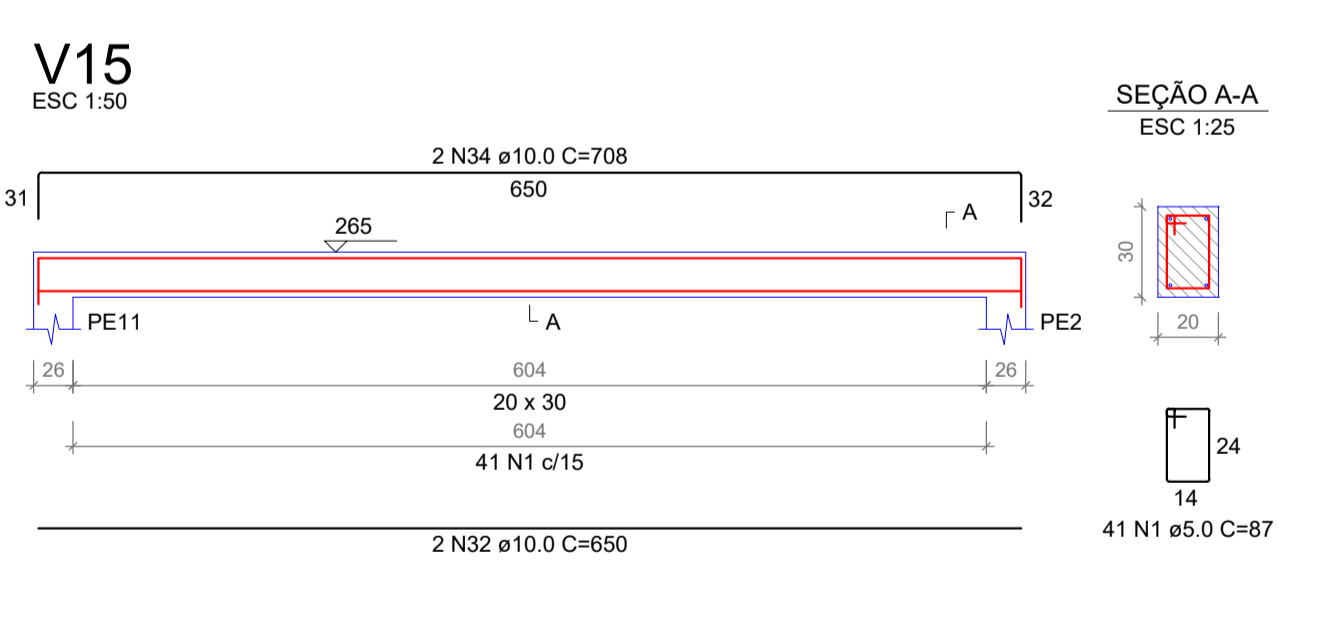
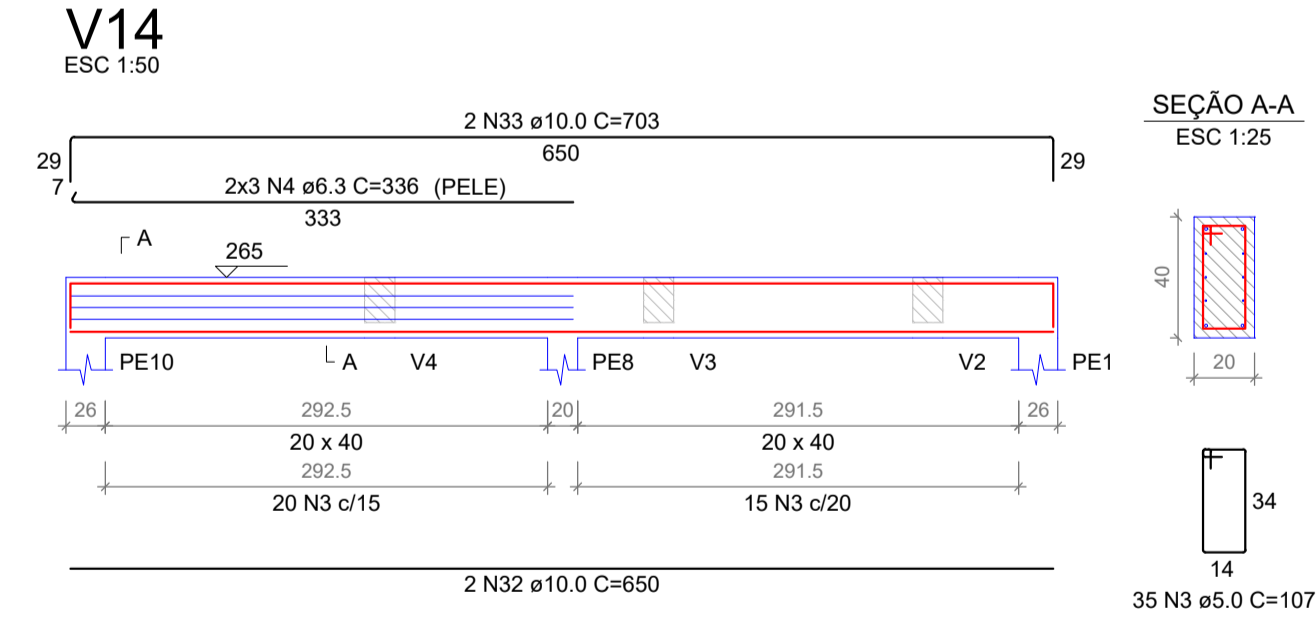
RELAÇÃO DO AÇO

AÇO	N	DIAM (mm)	QUANT	C.UNIT (cm)	C.TOTAL (cm)
CA60	1	5.0	530	87	46110
	2	5.0	159	77	12243
	3	5.0	188	107	20116
	4	6.3	6	336	2016
	5	8.0	2	829	1658
	6	8.0	2	796	1592
	7	8.0	2	820	1640
	8	8.0	2	1198	2396
	9	8.0	2	1200	2400
	10	8.0	2	203	406
	11	8.0	4	167	668
	12	8.0	4	203	812
	13	8.0	2	178	356
	14	8.0	2	220	440
	15	10.0	2	1117	2234
	16	10.0	2	1156	2312
	17	10.0	4	295	1180
	18	10.0	4	334	1336
	19	10.0	2	1120	2240
	20	10.0	2	1159	2318
	21	10.0	4	810	3240
	22	10.0	2	839	1678
	23	10.0	4	800	3200
	24	10.0	2	828	1656
	25	10.0	1	167	167
	26	10.0	1	165	165
	27	10.0	2	843	1686
	28	10.0	4	1071	4284
	29	10.0	4	271	1084
	30	10.0	4	1198	4792
	31	10.0	4	262	1048
	32	10.0	10	650	6500
	33	10.0	2	703	1406
	34	10.0	2	708	1416
	35	10.0	2	837	1674
	36	10.0	2	698	1396
	37	10.0	2	706	1412
	38	10.0	2	703	1406

RESUMO DO AÇO

AÇO	DIAM (mm)	C.TOTAL (m)	QUANT (Barras)	PESO (kg)
CA50	6.3	20.2	2	4.9
	8.0	123.7	11	48.3
	10.0	498.3	42	304.1
CA60	5.0	784.7	-	119.7
PESO TOTAL (kg)				
CA50		357.3		
CA60		119.7		

Volume de concreto (C-25) = 8.55 m³
Área de forma = 97.54 m²



OBRA LOCAL: **REFORMA ESCOLA Nº 5ª DA POMPÉIA**

PROPRIETÁRIO: Prefeitura Municipal de Cotiporã CNPJ: 90.898.487/0001-64

RESPONSÁVEL TÉCNICA: ESCALA: 1:150

ASSUNTO: **VIGAS FORRO**

PRANCHAS: EST-04

DATA: AGOSTO/2023