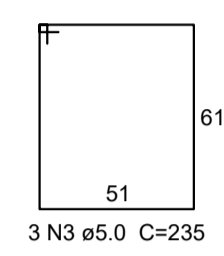
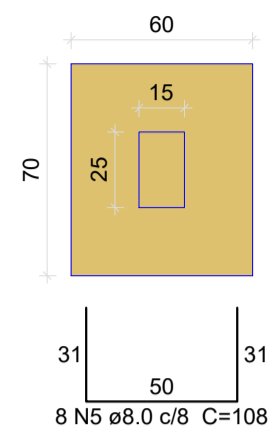
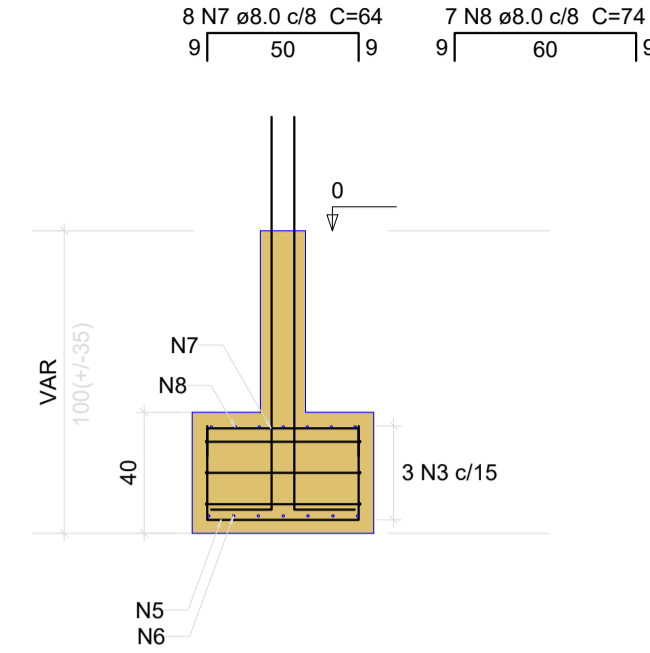


S1
PLANTA
ESC 1:25



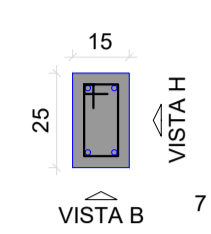
Solo com capacidade de suporte > 20.00 kgf/cm²
Solo compactado sobre a sapata
peso específico > 2000.00 kg/m³

CORTE
ESC 1:25



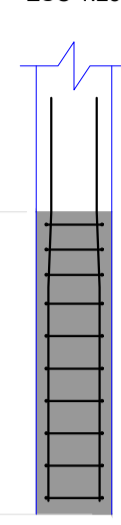
P1

BALDRAME - L1
SEÇÃO
ESC 1:20

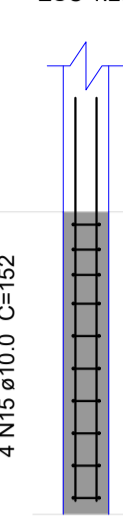


Solo com capacidade de suporte > 20.00 kgf/cm²
Solo compactado sobre a sapata
peso específico > 2000.00 kg/m³

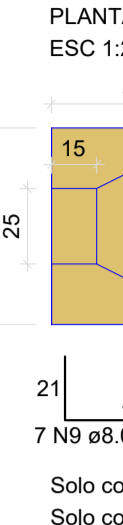
VISTA H
ESC 1:25



VISTA B
ESC 1:25

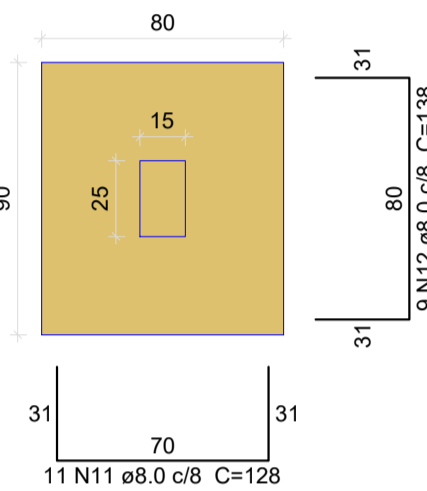


S2



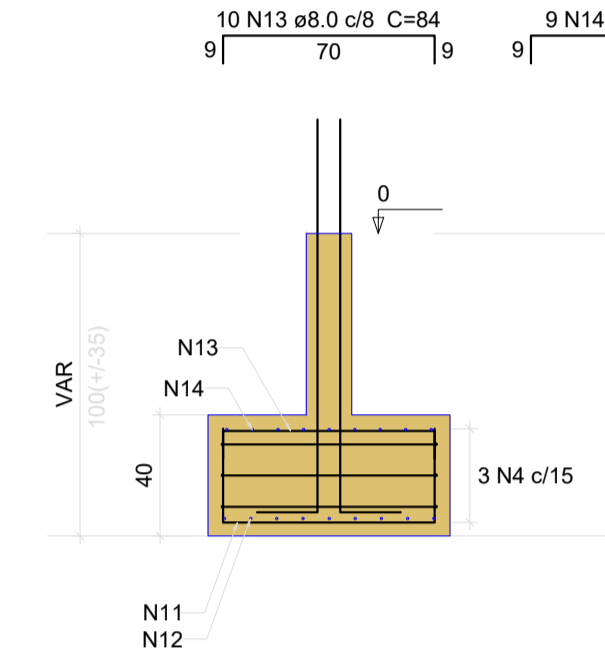
Solo com capacidade de suporte > 20.00 kgf/cm²
Solo compactado sobre a sapata
peso específico > 2000.00 kg/m³

S12
PLANTA
ESC 1:25



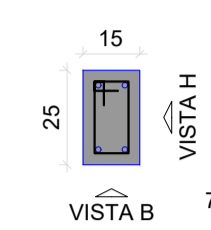
Solo com capacidade de suporte > 20.00 kgf/cm²
Solo compactado sobre a sapata
peso específico > 2000.00 kg/m³

CORTE
ESC 1:25



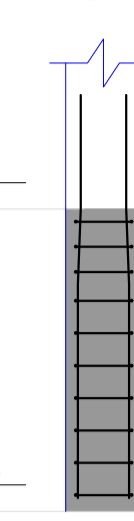
P2

BALDRAME - L1
SEÇÃO
ESC 1:20

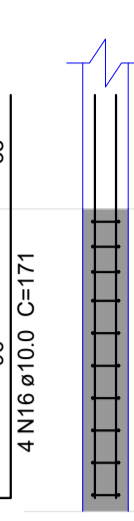


Solo com capacidade de suporte > 20.00 kgf/cm²
Solo compactado sobre a sapata
peso específico > 2000.00 kg/m³

VISTA H
ESC 1:25

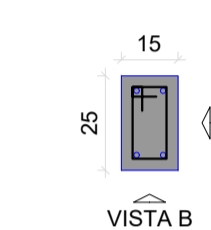


VISTA B
ESC 1:25



P12

BALDRAME - L1
SEÇÃO
ESC 1:20

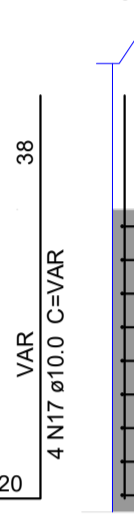


Solo com capacidade de suporte > 20.00 kgf/cm²
Solo compactado sobre a sapata
peso específico > 2000.00 kg/m³

VISTA H
ESC 1:25



VISTA B
ESC 1:25



Relação do aço

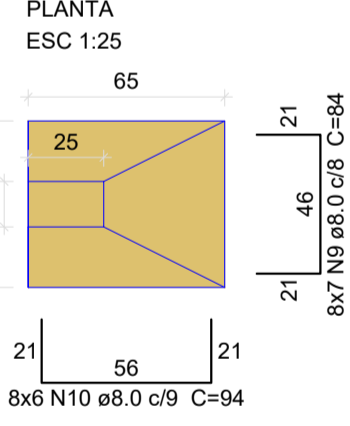
AÇO	N	DIAM (mm)	QUANT	S1		S2		S10	
				C.UNIT (cm)	C.TOTAL (cm)	C.UNIT (cm)	C.TOTAL (cm)	C.UNIT (cm)	C.TOTAL (cm)
CA60	1	5.0	85	67	5695				
	2	5.0	42	49	2058				
	3	5.0	3	235	705				
	4	5.0	3	315	945				
	5	8.0	8	108	864				
	6	8.0	7	118	826				
	7	8.0	8	64	512				
	8	8.0	7	74	518				
	9	8.0	63	84	5292				
	10	8.0	54	94	5076				
CA50	11	8.0	11	128	1408				
	12	8.0	9	138	1242				
	13	8.0	10	84	840				
	14	8.0	9	94	846				
	15	10.0	4	152	608				
	16	10.0	20	171	3420				
	17	10.0	4	VAR	VAR				
	18	10.0	12	VAR	VAR				
	19	10.0	4	129	516				
	20	10.0	2	75	150				

Resumo do aço

AÇO	DIAM (mm)	C.TOTAL (m)	PESO (kg)
CA50	8.0	174.3	68.8
CA60	10.0	73.6	45.3
CA60	5.0	94.1	14.5
PESO TOTAL (kg)			
CA50		114.1	
CA60		14.5	

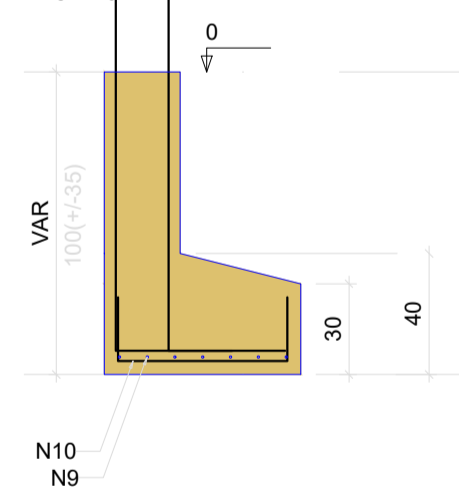
Volume de concreto (C-25) = 1.82 m³
Área de forma = 14.67 m²

S4=S5=S6=S7=S8=S9=S10=S11



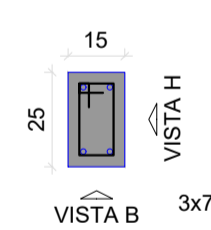
Solo com capacidade de suporte > 20.00 kgf/cm²
Solo compactado sobre a sapata
peso específico > 2000.00 kg/m³

CORTE
ESC 1:25



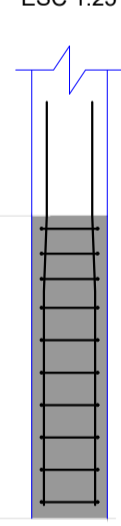
P4=P6=P10

BALDRAME - L1
SEÇÃO
ESC 1:20

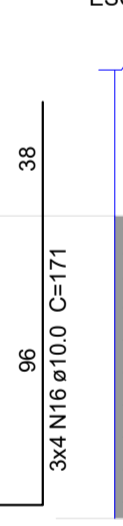


Solo com capacidade de suporte > 20.00 kgf/cm²
Solo compactado sobre a sapata
peso específico > 2000.00 kg/m³

VISTA H
ESC 1:25

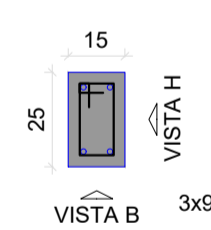


VISTA B
ESC 1:25



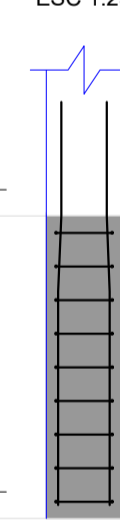
P7=P8=P11

BALDRAME - L1
SEÇÃO
ESC 1:20

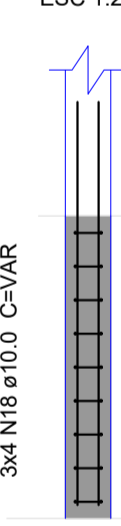


Solo com capacidade de suporte > 20.00 kgf/cm²
Solo compactado sobre a sapata
peso específico > 2000.00 kg/m³

VISTA H
ESC 1:25

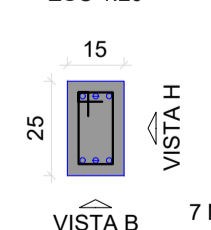


VISTA B
ESC 1:25



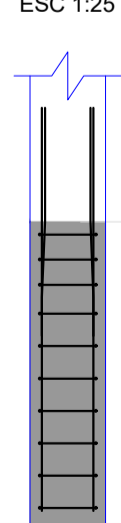
P9

BALDRAME - L1
SEÇÃO
ESC 1:20



Solo com capacidade de suporte > 20.00 kgf/cm²
Solo compactado sobre a sapata
peso específico > 2000.00 kg/m³

VISTA H
ESC 1:25

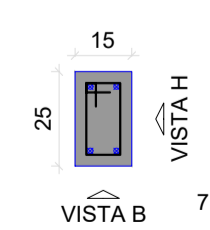


VISTA B
ESC 1:25



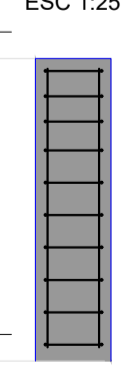
P5

BALDRAME - L1
SEÇÃO
ESC 1:20



Solo com capacidade de suporte > 20.00 kgf/cm²
Solo compactado sobre a sapata
peso específico > 2000.00 kg/m³

VISTA H
ESC 1:25



VISTA B
ESC 1:25



<p>Obras</p> <p>REFORMA E.M.E.F. CAMINHOS DO SABER</p> <p>RUA PEDRO BRENDA 374 - COTIPORÁ RS</p>			
Projeto	<p>CRISTIANO FUGALI</p> <p>RS 236549</p>		Proprietário
<p>Projeto</p> <p>PROJETO ESTRUTURAL</p> <p>BALDRAME - PILARES E SAPATAS</p>			Folha
			3
Conj.	EST	Fol./Conj.	3/7
Data	21/03/2023	Escala	Desenho
		CRIS	Conferência
		CRIS	