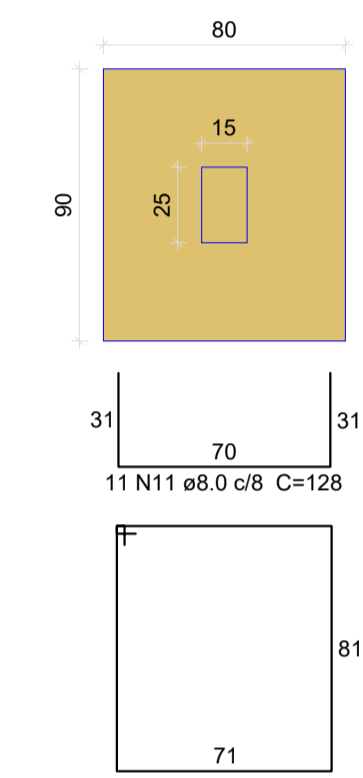
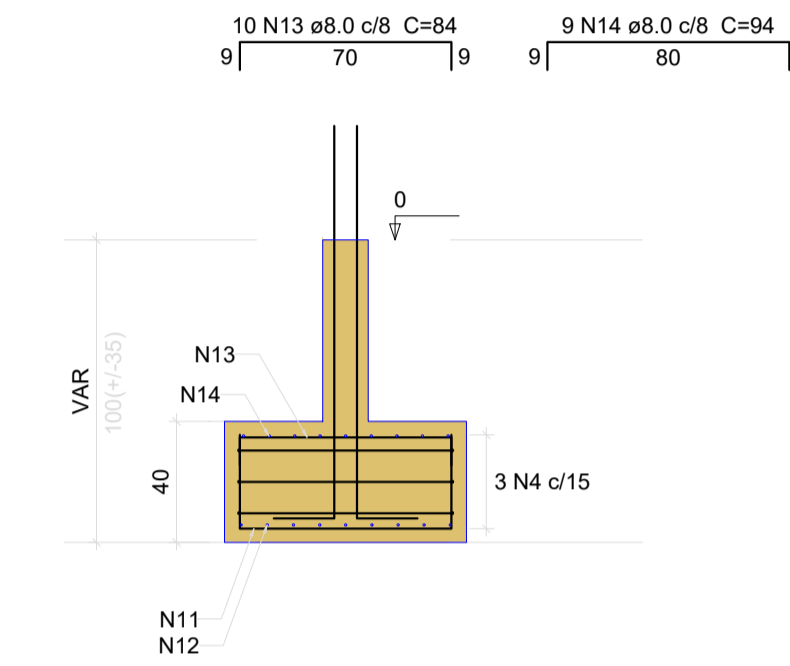


S12
PLANTA
ESC 1:25



CORTE
ESC 1:25



Solo com capacidade de suporte > 20.00 kgf/cm²
Solo compactado sobre a sapata
peso específico > 2000.00 kgf/m³

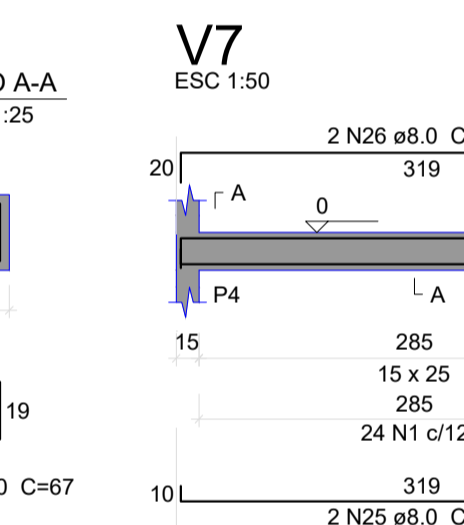
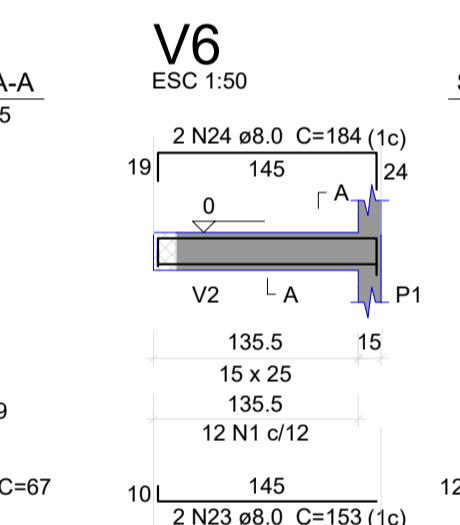
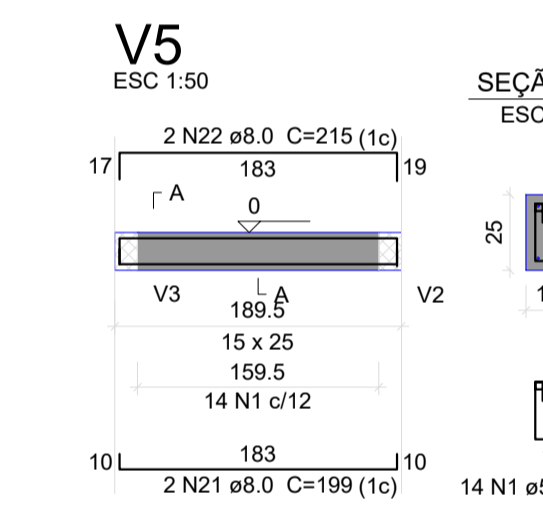
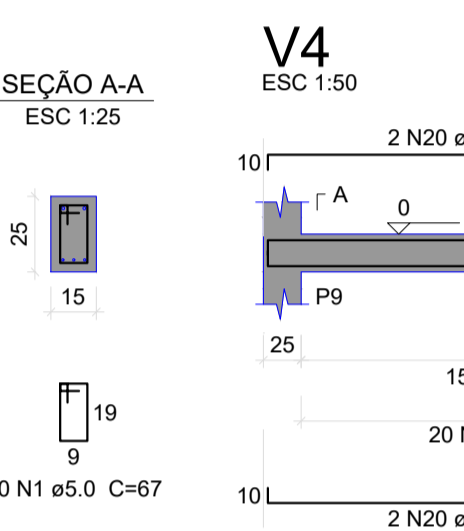
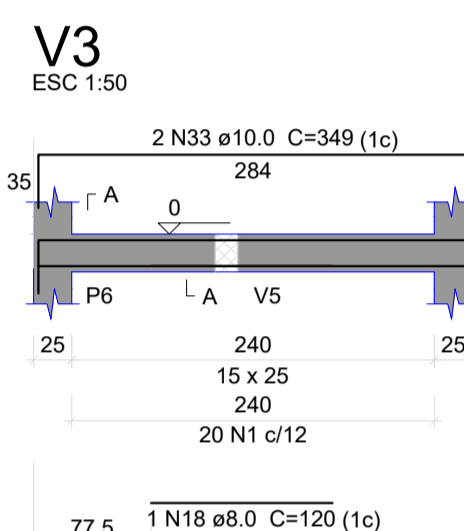
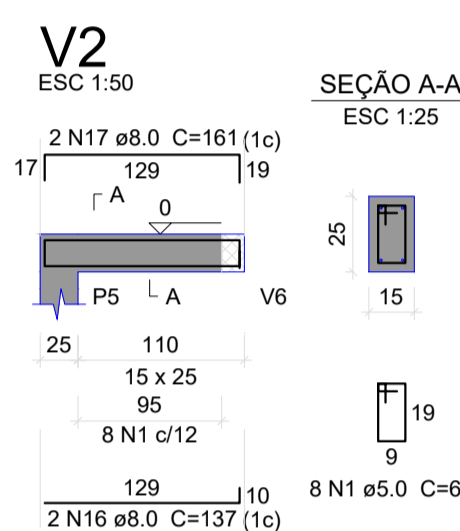
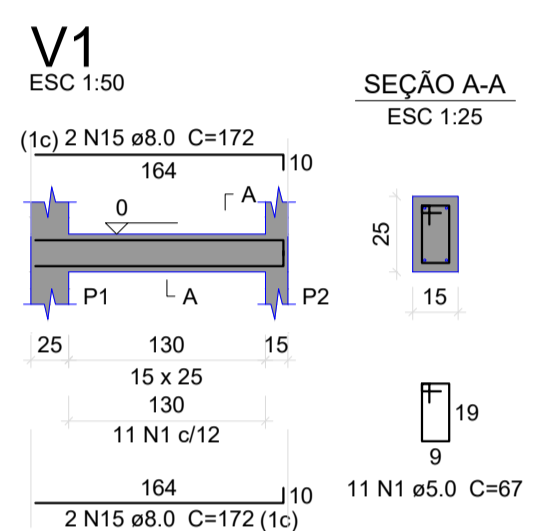
Relação do aço

ACO	N	DIAM (mm)	QUANT	C.LIMIT (cm)	C.TOTAL (cm)
CA60	1	5.0	194	67	12998
CA60	2	5.0	42	49	2058
CA60	3	5.0	3	235	705
CA60	4	5.0	3	315	945
CA50	5	8.0	8	108	864
CA50	6	8.0	7	118	826
CA50	7	8.0	8	64	512
CA50	8	8.0	7	74	518
CA50	9	8.0	63	84	5292
CA50	10	8.0	54	94	5076
CA50	11	8.0	11	128	1408
CA50	12	8.0	9	138	1242
CA50	13	8.0	10	84	840
CA50	14	8.0	9	94	846
CA50	15	8.0	4	172	688
CA50	16	8.0	2	137	274
CA50	17	8.0	2	161	322
CA50	18	8.0	1	120	120
CA50	19	8.0	2	284	568
CA50	20	8.0	4	300	1200
CA50	21	8.0	2	199	398
CA50	22	8.0	2	215	430
CA50	23	8.0	2	153	306
CA50	24	8.0	2	184	368
CA50	25	8.0	2	327	654
CA50	26	8.0	2	337	674
CA50	27	10.0	4	152	608
CA50	28	10.0	20	171	3420
CA50	29	10.0	4	VAR	VAR
CA50	30	10.0	12	VAR	VAR
CA50	31	10.0	4	129	516
CA50	32	10.0	2	75	150
CA50	33	10.0	2	349	698

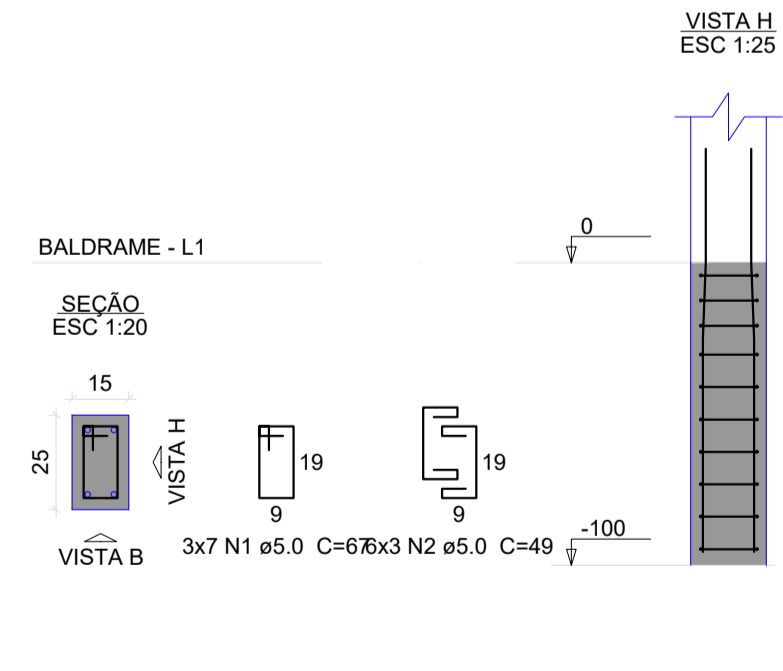
Resumo do aço

ACO	DIAM (mm)	C.TOTAL (m)	PESO (kg)
CA50	8.0	234.3	92.4
CA50	10.0	80.6	49.6
CA60	5.0	167.1	25.7
PESO TOTAL (kg)			
CA50		142.1	
CA60		25.7	

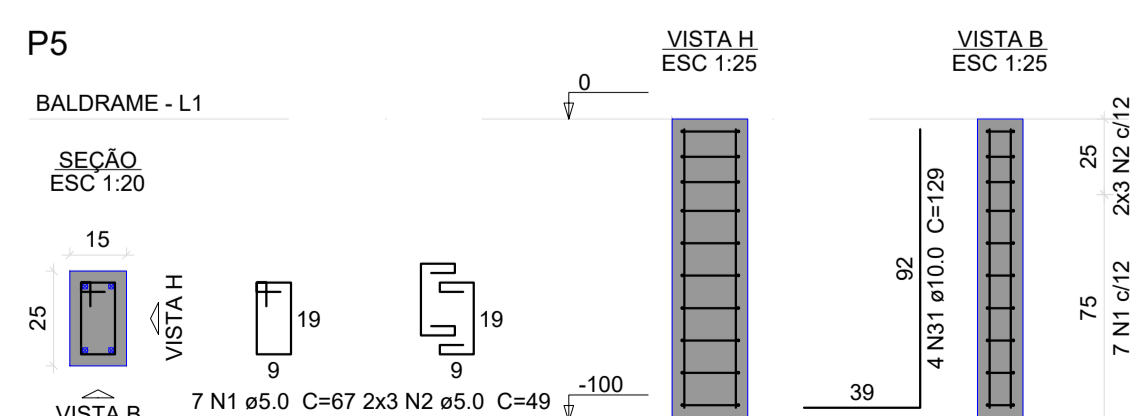
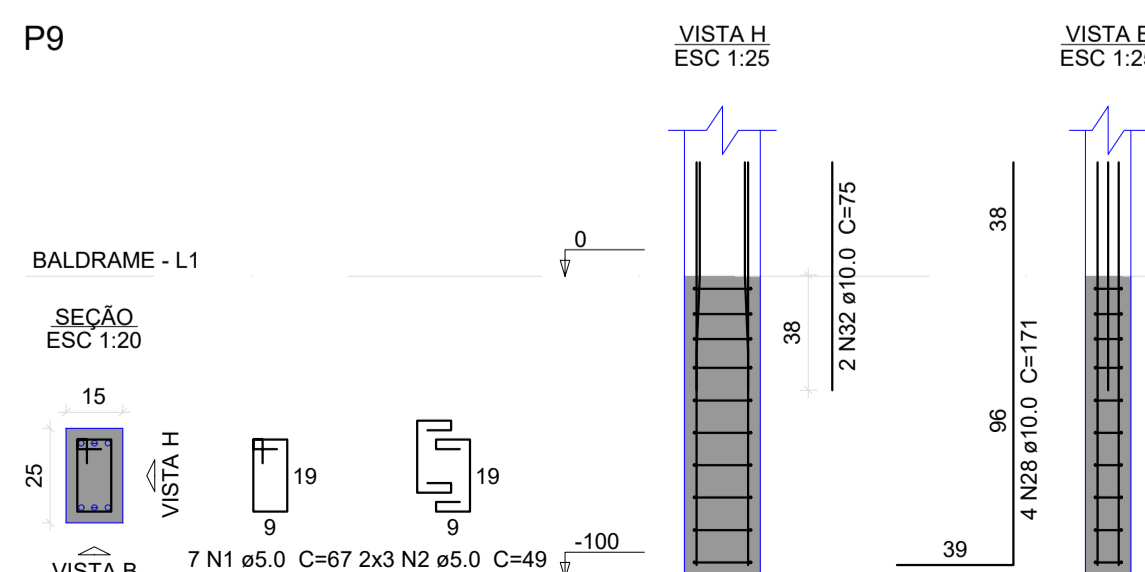
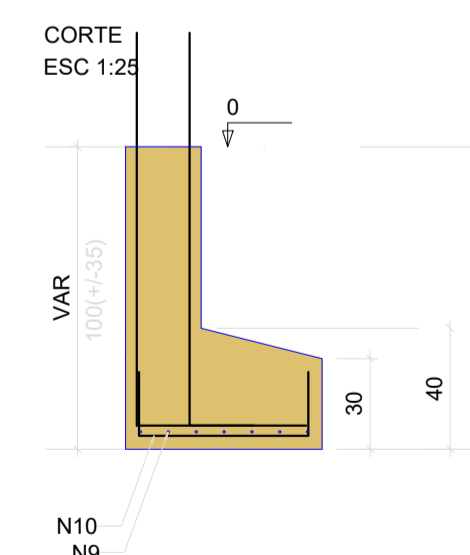
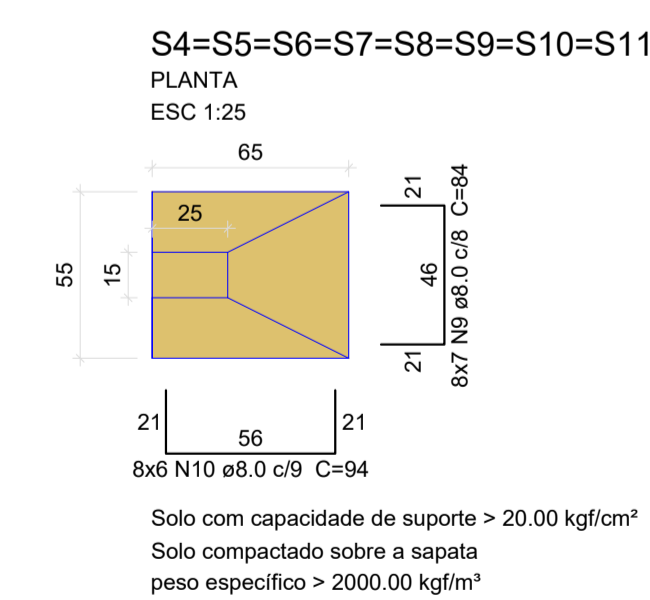
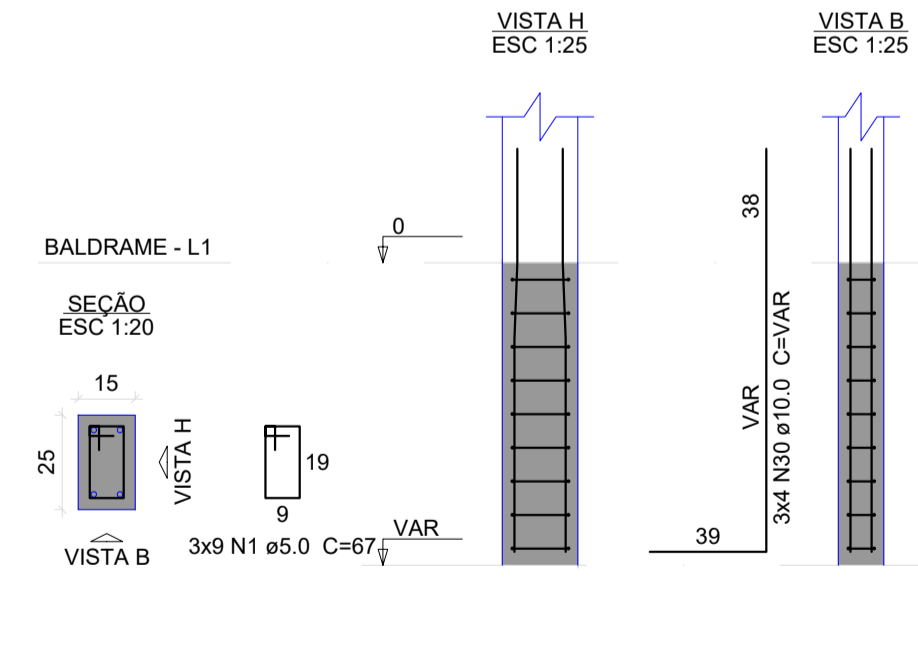
Volume de concreto (C-25) = 2.31 m³
Área de forma = 23.05 m²



P4=P6=P10



P7=P8=P11



Obras			
REFORMA E.M.E.F. CAMINHOS DO SABER			
RUA PEDRO BRENDA 374 - COTIPORÁ RS			
Projeto	CRISTIANO FUGALI	Proprietário	PREFEITURA MUNICIPAL DE COTIPORÁ
Projeto	PROJETO ESTRUTURAL		Folha
BALDRAME- PILARES, VIGAS E SAPATAS			2
Conj.	EST	Fis./Conj.	2/7
Data	21-03-2023	Escala	Escala
Desenho	CRIS	Conferência	CRIS